

“...growth has been achieved by consistently and safely delivering projects on time and within budget...”



BUILDING

- Design and Construct
- Education
- Health
- Commercial
- Retail
- Industrial
- Refurbishment

CIVIL ENGINEERING-AIRPORTS

- Airside Maintenance
- Aircraft Stand Repairs and Reconstruction
- Specialist Concrete Repairs
- Runways and Taxiways Repairs and Reconstruction
- Snow Clearance

CIVIL ENGINEERING-RAIL

- Bridges
- Structural Repairs
- Structural Painting
- Line-side Works
- Vegetation Clearance
- Tunnels
- Stations and Depots
- Possession Management
- Outside Parties

CIVIL ENGINEERING-OTHER

- Highways
- Bridges
- Urban Renewal
- Wastewater
- Clean Water
- Waste & Recycling Centres
- Environmental
- Marine and River





DYER & BUTLER

Founded in 1979, Dyer & Butler is a regional contractor with a solid financial and technical base spanning a wide spectrum of civil engineering and building.

The company has earned an enviable reputation for carrying out often complex construction work to the highest standards. Consequently, its customer base includes a wide range of private and public sector organisations. An exemplary safety record further enhances this reputation.

Activity across the area covered by the company is co-ordinated from the head office in Southampton. This is facilitated by an integrated IT network so that local offices in the regions can access information and communicate with head office at any time. These offices allow focus and understanding of local issues and the ability to be there when customers require a prompt response.

Steady, sustained growth has been achieved by consistently and safely delivering projects on time and within budget. A commitment to working closely with customers and a willingness to embrace the challenges of modern construction has allowed the company to form and maintain long-term relationships, resulting in a high level of repeat business. Setting high standards is an objective forming part of the continual development of the company and the people employed, so as to build a sustainable future.

WORKING WITH DYER & BUTLER

SINCE THE COMPANY WAS FORMED IN 1979 COLLABORATIVE WORKING HAS BEEN A FUNDAMENTAL PART OF ALL ASPECTS OF THE BUSINESS. WORKING IN A CO-OPERATIVE WAY WITH ALL THE STAKEHOLDERS INVOLVED WITH A PROJECT HAS RESULTED IN A LARGE NUMBER OF COMPLIMENTARY REPORTS AND AN ENVIABLE REPUTATION.

A team committed to collaborative working allows imaginative, economical solutions to be developed and is fundamental to building good long-term relationships. Formal partnering, framework contracts and alliances are regularly entered into. When appropriate, formal Partnering Charters are drawn up jointly and agreed by all. Similarly, the company has long-term supply chain agreements with key suppliers. These arrangements all contribute to a beneficial outcome for all.

The company's approach to project management is a structured one based on establishing mutual trust, openness and teamwork. By this means the best outcome for the project is assured. Progress, quality and financial control are all monitored regularly, using the latest information technology, as part of a set of controls designed to provide members of the team with the information they require. This approach to project management has been rewarded by a number of long-term agreements and framework contracts with organisations including BAA, Network Rail, Hampshire County Council, Wessex Water and the Environment Agency.



A committed team of over 300 well trained employees



The company takes pride in working closely with clients throughout all stages of a project



Dyer & Butler's design and build team has worked closely with South East Water on Swainshill reservoir



“Collaborative working allows imaginative economical solutions to be developed.”

63% of contracts are carried out under framework or partnering agreements

83% of all contracts carried out are repeat business



A3 Bus Priority Project - Purbrook Village

Multi-disciplinary teams ensure efficient planning and execution of the work.

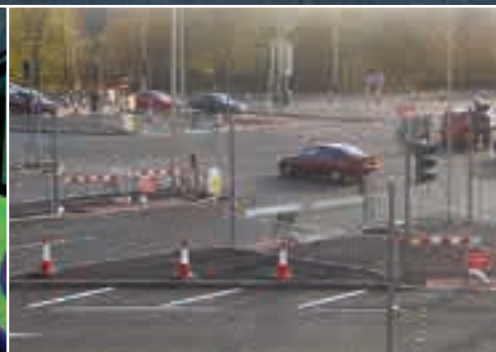


A3 Bus Priority Project
This £13m, 5-year partnering contract with Hampshire CC links Hordean with Portsmouth.



A3 Bus Priority Project

The official opening of Phase 1 by members of Hampshire County Council



M27/A27 Paulsgrove Junction Improvement, Portsmouth.

Conversion of major roundabout to traffic-light controlled junction, with extension of existing subways, major service diversions and installation of 73 traffic-signal heads.



HIGHWAYS

HIGHWAY PROJECTS HAVE BEEN A CORE ACTIVITY SINCE THE COMPANY WAS FORMED IN 1979.

Projects have included new roads, dualling of single carriageways, and improvements to existing roads, junctions and motorway access. Environmental improvements have been carried out for clients including local authorities, developers and the Highways Agency.

Dyer & Butler offer all the services associated with highways, including traffic management, safety fencing, surfacing and street lighting. Retaining walls, culverts and footbridges and bridges over or under roads, railways and rivers are undertaken by skilled specialists within the company. Multi-disciplinary teams ensure that the work is efficiently planned and executed.

Where possible the company introduces an innovative approach to pavement design, often recycling material on site or using soil stabilisation techniques.



M27 Rookery Farm
Bridge Deck Replacement

Staged replacement of the span crossing the eastbound carriageway.

Unicorn Gate Junction - Portsmouth

Conversion of a roundabout to a traffic light controlled junction, with full facilities for pedestrians. This included the construction of an extension to the subway under the newly constructed junction in addition to earthworks and the construction of carriageways including traffic-light and street furniture installation

RAIL

SINCE THE COMPANY STARTED TRADING, RAILWAY WORK HAS BEEN A CORE ACTIVITY WITH PROJECTS CARRIED OUT THROUGHOUT SOUTHERN ENGLAND AND WALES.

The work has been varied and has included new stations, bridge repairs and strengthening, retaining walls, vegetation clearance, structural painting, building refurbishment and possession management.

These projects have been a mixture of stand-alone contracts and schemes within framework agreements and term contracts. The company's Rail Division is highly regarded by Network Rail and has been called in on many occasions to support other companies.

A Contractor's Assurance Case and Link-Up Approval (independently audited under the Proof scheme) ensure that the highest standards are maintained by a highly committed team of skilled operatives and managers.



A CORE ACTIVITY SINCE THE COMPANY STARTED TRADING - RAIL PROJECTS ARE CARRIED OUT THROUGHOUT SOUTHERN ENGLAND AND WALES.



Water Catchment Trays,
Balcombe Tunnel, Sussex

Design and build of catchment trays to manage and control water ingress.



St Leonards Footbridge
on the A31, Dorset.

Construction of a composite steel and concrete footbridge with approach-ramps.



Refurbishment of Bournemouth
Station, Dorset.

Builders work on the Grade 2 listed Victorian station, with the safety of the public a key issue and extensive liaison with English Heritage.



Barnespool Bridge - Eton

Working closely with English Heritage, Dyer & Butler carried out steel-strengthening, cast-iron repairs and repainting on this listed structure.

The completed project was highly commended for teamwork under the Thames Valley ICE Awards for 2004.



Woodford East Viaduct, on the M11, Essex.

This lane-rental contract for parapet-strengthening and replacement of railings was completed 18 days early.

BRIDGE WORKS

A MAJOR PART OF THE COMPANY'S WORKLOAD SINCE THE VERY BEGINNING.

Projects have included road, rail, river and canal crossings. New bridges have been constructed and existing bridges have been widened, strengthened or repaired often in situations where access has been difficult or traffic flows have had to be maintained. Possession working has been a regular feature of the company's operations.

Dyer & Butler's highly qualified staff, often supported by specialist consultants, have successfully completed many contracts for customers including local authorities, Network Rail, and the Highways Agency.

AIRPORTS

WORKING CONTINUOUSLY ON AIRPORT PROJECTS AND MAINTENANCE SINCE 1990

A series of term contracts, stand-alone projects, partnered alliances and framework agreements led to the award in 2003 of the 2nd Generation Partnering Framework for infrastructure maintenance and local projects at the 4 BAA airports in SE England. The contract has a forecast value of £100m and runs until 2013. It bears testimony to Dyer & Butler's experience and expertise in airport work.

Projects are undertaken at Heathrow, Gatwick, Stansted and Southampton Airports and at Bournemouth, London City and Biggin Hill Airports and with many ancillary airport service organisations. Although most of the work is civil engineering, building skills are also frequently called upon.



Airside Works, Stansted Airport

Replacement of concrete taxiway bays.

The Welcome Arch, Gatwick Airport

Construction of the landmark Welcome Arch over the main access road to the South Terminal demanded a complex traffic management scheme.

Bearing Replacement, Gatwick Airport.

Dyer & Butler refurbished and replaced 80 bearings on the viaduct carrying the inter-terminal transit system over the A23 dual carriageway.



A FLEXIBLE AND RESPONSIVE TEAM TAKING 'AIRSIDE' OR 'LANDSIDE' WORK IN THEIR STRIDE, DAY OR NIGHT, THROUGHOUT THE WHOLE YEAR.



BUILDING

THE MINISTRY OF DEFENCE HAS BEEN A KEY CUSTOMER FOR BUILDING WORKS FOR MANY YEARS.

The building division has expanded in recent years and now takes on a wide range of projects for public and private sector clients on a traditional or design and build basis.

Work has included schools, training establishments, kitchen and catering facilities, medical facilities, railway stations, commercial and industrial buildings and offices.

The building team works collaboratively with professional design teams to understand the clients requirements in detail and to complete their projects rapidly and successfully.



Medical and Dental Centre, Warminster Garrison.

A traditionally constructed building housing consulting suites, treatment rooms, dental surgeries and waiting and administrative areas, the contract was undertaken on a design and build basis.



Refurbishment of Kitchen Complex, Royal Naval Hospital Haslar.

The refurbishment of an existing kitchen, serving the hospital and associated facilities, including all building services and building management systems.

MAIN IMAGE
Stand 22 Reconstruction, Gatwick Airport.

The breaking out of the existing aircraft stand and the construction of the new stand was completed ahead of schedule.



VAST EXPERIENCE AND CLOSE CUSTOMER INVOLVEMENT ARE KEY FACTORS IN DELIVERING WELL DESIGNED AND COST EFFECTIVE DESIGN AND BUILD PROJECTS ON TIME



DESIGN AND BUILD

THE COMPANY'S CONSIDERABLE EXPERIENCE IN DESIGN AND BUILD ENABLES RESPONSE TO INCREASING DEMAND BY CLEARLY UNDERSTANDING DESIGN FUNCTIONALITY, BUILDABILITY, COST CERTAINTY AND QUALITY

Experienced members of the team work closely with the customer throughout all stages of the project to ensure a clear understanding of their specific needs.

Early involvement with the customer identifies what is needed and tight management at the design stage avoids potential problems enabling delivery of a cost effective, well-designed project completed on time.



Medical & Dental Centre, Warminster Garrison.

The centre included 3 dental surgeries.

Charles House, Gosport Marina.

Charles House faces across the entrance to Portsmouth Harbour, providing 2 commercial floors and 2 residential floors, each with 2 flats.

Little Bushywarren Composting Site, Basingstoke.

A 4-hectare extension to a green-waste composting facility, the project included settlement lagoons and a product storage shed. An innovative design solution using soil stabilisation and roller-compacted concrete was adopted, reducing cost and speeding construction.



DEDICATED TEAMS OF EXPERIENCED STAFF WORK IN OFTEN DIFFICULT CONDITIONS, SUBJECT TO THE VAGARIES OF TIDE AND WEATHER.....



MARINE AND RIVERS

OVER THE YEARS, THE COMPANY HAS SUCCESSFULLY COMPLETED A WIDE RANGE OF FLOOD ALLEVIATION AND MARINE PROJECTS.

These have included reinforced earth structures, clay cored dams, flood relief channels and pipelines, sheet piling as well as dockside fendering, navigation marks and coastal defence works including groyne construction and beach replenishment.

Dedicated teams of experienced staff work in often difficult conditions, subject to the vagaries of tide and weather, to bring these projects to a successful conclusion.



Fender Repairs, HM Dockyard, Portsmouth

Installation of plastic-coated steel piles and reinforced plastic fender-lumber. Work was carried out from a spud-leg barge. A 180-tonne dockside rail-mounted crane was also used.

Sea-Defence Maintenance Works, Canford Cliffs, Dorset

Groyne replacement, using steel H-piles and timber planks. Dyer & Butler has also carried out beach replenishment and shingle recycling works at many sites between Hayling Island and Poole.

Flood Alleviation, Swanage.

This project involved the construction of 2 earth-fill dams in clay to create 2 flood-storage areas, with improvements to river channels, construction of 5 bridges, culverts and flood-control structures with automatic flood control systems.

WATER SERVICES

FROM THE VERY BEGINNING THE COMPANY HAS CARRIED OUT A VARIETY OF WORK ON BOTH 'DIRTY' AND 'CLEAN' WATER TREATMENT WORKS AND THE PIPELINES ASSOCIATED WITH THEM.

Schemes have been successfully completed for central and local government organisations, the Ministry of Defence, water authorities and commercial organisations.

A large number of the projects have included electrical and mechanical work together with process engineering and civil engineering construction. Buildings have also been constructed.

Many years of operating in this sector have enabled the company to build a wealth of experience and a reputation for collaborative working. This is particularly valuable when working with clients' operational staff on active treatment works.



Storrington STW, W Sussex

Dyer & Butler undertook comprehensive modifications to double the throughput of the sewage treatment works.



Clarendon Park WTW, Salisbury

Construction of a new nitrate-removal building, with a balancing tank, cross-site pipework, drainage and landscaping.



'MANY YEARS OF OPERATING IN THIS SECTOR HAVE ENABLED THE COMPANY TO BUILD A WEALTH OF EXPERIENCE AND A REPUTATION FOR COLLABORATIVE WORKING'



Swainhill Reservoir

Works consisted of the design and construction of a new twin-cell 4 mega-litre reservoir and the extensive refurbishment of an existing 2.8 mega-litre reservoir, whilst maintaining uninterrupted distribution to the network.

Dyer & Butler also completed building work, landscaping and the construction of site roads in addition to mechanical, electrical and instrumentation work, including design, delivery, installation and commissioning.

Filtration Plants, Hampshire and Dorset.

Design and construction of 2 buildings to house cryptosporidium filtration equipment, including the procurement and installation of the process plant, pipework, drainage and landscaping.

HEALTH AND SAFETY

COMPANY MANAGEMENT PROCEDURES ARE DESIGNED TO INTEGRATE HEALTH & SAFETY REQUIREMENTS WITH MANAGEMENT OF THE BUSINESS.

The team includes the company's own dedicated health & safety officers, who work closely with the people in the field to be on hand at all times, in addition to carrying out inspections and regular on-site and office based performance reviews.

Procedures are updated as required to incorporate best practice and current legislation.

The Health & Safety of all who work for the company or are affected by the company's activities has the highest priority of all the issues which have to be managed effectively for the efficient delivery of completed projects. This is reflected in the company's accreditation to ISO 9001:2000 for quality and ISO 14001:2004 for environmental management.

Accreditation under the Contractors Health & Safety Assessment Scheme (CHAS), Link-Up Proof, Constructionline, Verify, Achilles and Exor all bear testimony to the prime objective of maintaining safe and healthy working conditions for all.

Woodmill Activity Centre
Dyer & Butler designed an environmentally friendly building utilising a timber frame, cedar cladding and shingle roof which is insulated with natural sheep's wool. It incorporates a wind-generator, solar panels and a self-contained sewerage system.

DYER & BUTLER ARE MEETING THE NEEDS OF THE ENVIRONMENT BY PROVIDING SUSTAINABLE SOLUTIONS TODAY



Lord Brougham presenting Pete Ives of Dyer & Butler Airports Division with the Gold RoSPA Award



A well-established training programme develops personal skills to the full, enabling teams to tackle complex and demanding tasks.





QUALITY ASSURANCE

AS WITH HEALTH & SAFETY, QUALITY AND ENVIRONMENTAL MANAGEMENT FORMS AN INTEGRAL PART OF THE COMPANY'S MANAGEMENT PROCEDURES.

Compliance with ISO 9001 and 14001 for both construction and design services, together with a willingness to work towards sustainability, ensures that the company's projects are managed to achieve the best possible outcome. Continual improvement forms a fundamental part of the company's philosophy for managing all aspects of the business with the objectives of personal well-being and development for employees, together with cost-effective and efficiently run projects.



Woking Park Ponds Restoration
This contract involved the regeneration of two ponds within the town-centre park - reforming and dredging of the two ponds realignment of an adjacent riverbank and footpath and construction of a silt-drying lagoon followed extensive site clearance.



ENVIRONMENT

DYER & BUTLER IS ENVIRONMENTALLY CONSCIOUS AND RESPONSIBLE AND COMMITTED TO DEVELOPING, PROMOTING AND ACHIEVING THE HIGHEST STANDARDS OF ENVIRONMENTAL PRACTICES.

In addition to implementing and monitoring programmes to continually improve understanding and use of natural resources, the Environment Manager works closely with customers, project teams and suppliers to enhance environmental performance across all aspects of construction and waste management.

The company is meeting the needs of the environment by providing sustainable solutions today and are proud to hold the much sought after UVDB Verify accreditation from Achilles, reflecting the highest standards of performance in environmental planning, performance and measurement across the whole organisation.



THE TEAM

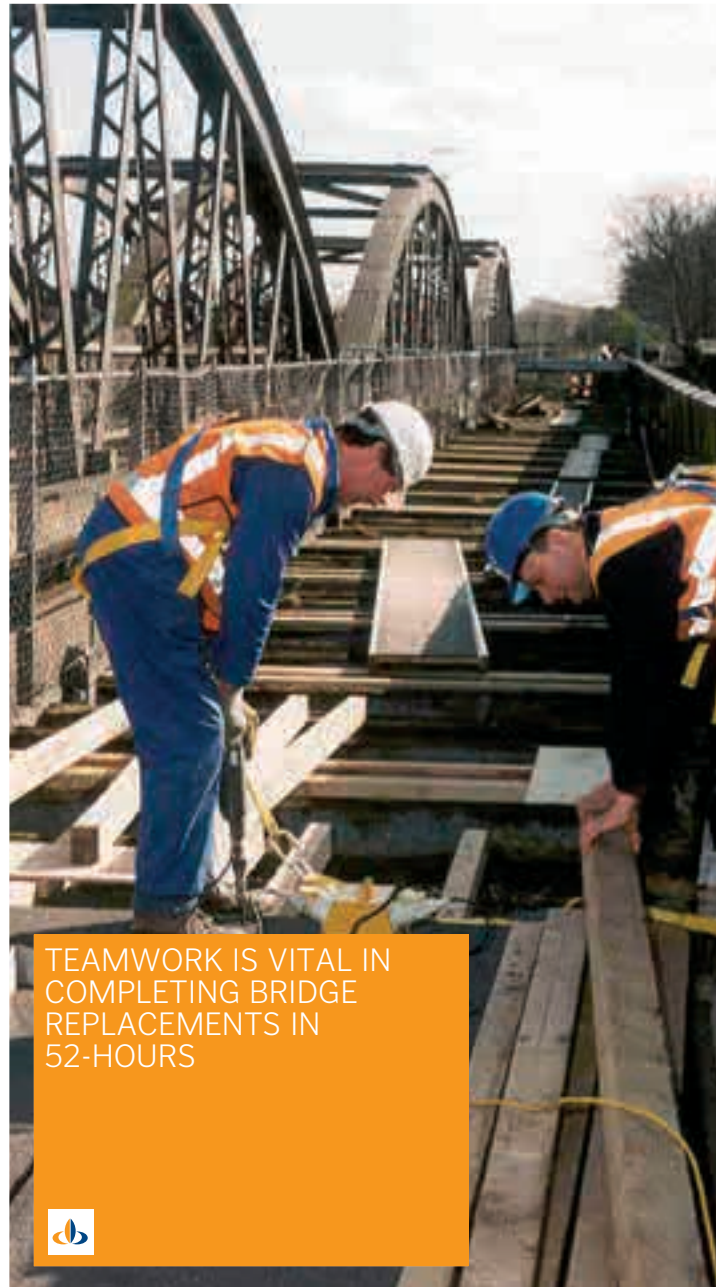
THE SUCCESS OF THE COMPANY HAS BEEN BUILT ON THE QUALITY OF THE PEOPLE WORKING WITHIN IT AND THEIR ON-GOING COMMITMENT TO THE COMPANY.

The company has a high proportion of professionally qualified and skilled operatives.

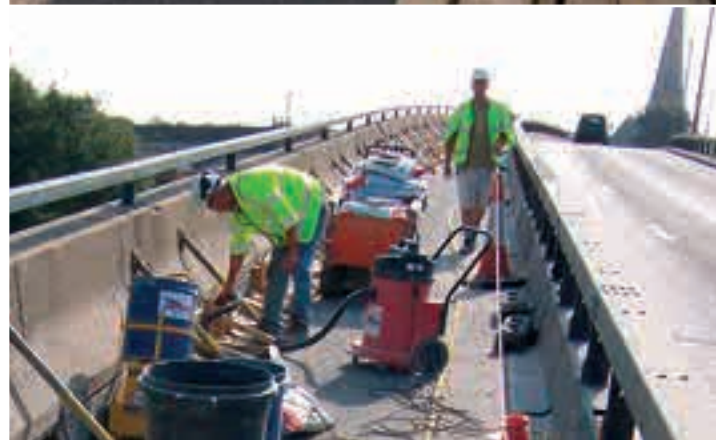
To make it possible for people to realise their potential, training programmes focusing on the changing needs of the industry and aimed at developing the skills and knowledge of the individual are regularly reviewed and implemented.

Investment in the team results in highly skilled, motivated and versatile people capable of delivering improved efficiencies in all areas with consequent job satisfaction and first class relationships with customers.

The team is responsible for the very high percentage of repeat business that customers reward the company.



TEAMWORK IS VITAL IN COMPLETING BRIDGE REPLACEMENTS IN 52-HOURS



Dyer & Butler staff work hard and play hard!
They are also active in the local community.

FINANCIAL STATEMENT

“CONTROLLED GROWTH HAS RESULTED IN FINANCIAL STABILITY”

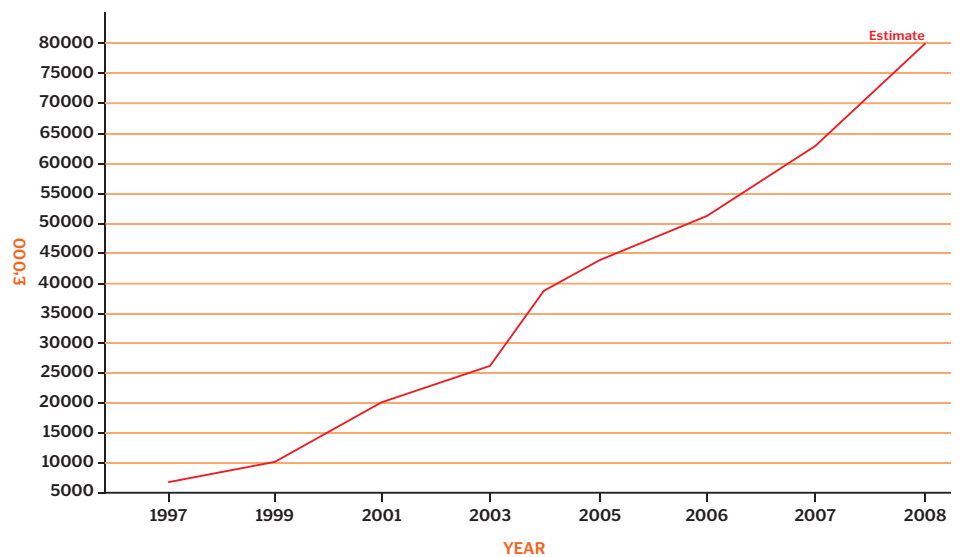
Mike Donnelly
Financial Director



Dyer & Butler has achieved sustained growth of more than 15% per year over the last 10 years.

Whilst taking advantage of market opportunities when they arise the company has always been aware that growth should be carefully managed. Consequently financial stability and profitability have been maintained.

A sound financial base has allowed the company to widen its customer base and to investigate new markets in order to reduce the impact of economic downturns and to provide opportunities for growth.

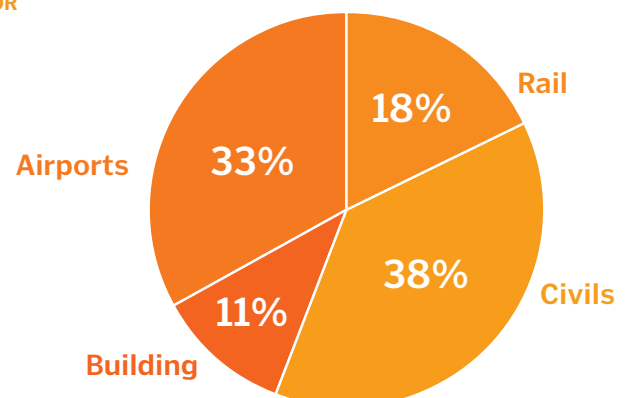


With a management structure which allows members of the team to develop their careers, supported by training and experience, the company has a low rate of turnover of staff. The company's graduate training scheme has been very successful and provides further support for the company's strategy of controlled growth.

The following indicators reflect the continual improvement and ongoing strength of the company.

• Current number of employees	465
• CSCS/PTS Card Holders	88%
• Typical annual training attendance	687 (Average 2.3 per person)
• Number of professionally qualified staff	52
• Framework/partnering turnover	63%
• Repeat business turnover	83%

TURNOVER BY SECTOR



Spacious and newly-built open-plan offices encourage teamwork and an open-culture.



DYER & BUTLER

HEAD OFFICE

Mead House Station Road Nursling
Southampton SO16 0AH

Tel: 023 8074 2222

Fax: 023 8074 2200

enquiries@dyerandbutler.co.uk

www.dyerandbutler.co.uk



GATWICK

Tel: 01293 567153

Fax: 01293 569182

enquiries.gatwick@dyerandbutler.co.uk

HEATHROW

Tel: 020 8759 8634

Fax: 020 8759 1578

enquiries.heathrow@dyerandbutler.co.uk

PLYMOUTH

Tel: 01364 646140

Fax: 01364 646149

enquiries.plymouth@dyerandbutler.co.uk

STANSTED

Tel: 01279 682230

Fax: 01279 682231

enquiries.stansted@dyerandbutler.co.uk

SWANSEA

Tel: 01792 465937

Fax: 01792 466123

enquiries.swansea@dyerandbutler.co.uk